



Monthly Financial Update

For the Month Ended February 28, 2019

Prepared by: Knox County Finance Dept.

Knox County Commission

TABLE OF CONTENTS

Summary Schedule – Operating Funds for Budget Report to the Citizenry.....1

General Fund – Sales Tax Analysis.....2

General Purpose School Fund – Sales Tax Analysis.....3

Engineering & Public Works Fund – Sales Tax Analysis.....4

General Fund – Property Tax Trend Analysis.....5

General Purpose School Fund – Property Tax Trend Analysis.....6

Debt Service – Property Tax Trend Analysis.....7

Hotel/Motel Fund.....8

Wheel Tax Report.....9

Chancery/Probate Courts.....10

Criminal/Sessions Court.....11

Circuit/Civil Sessions and Juvenile Court Clerk.....12

KNOX COUNTY, TENNESSEE

**Summary Schedule - Operating Funds
for the Budget Report to the Citizenry
For eight months ended February 28, 2019 and 2018**

	2018-2019			2017-2018			Year to Date Increase (Decrease)
	Annual Budget	Year to Date Actual	% of Annual Budget	Annual Budget	Year to Date Actual	% of Annual Budget	
Revenues and Operating Transfers In:							
General Fund	\$ 184,581,342	\$ 140,494,708	76.12%	\$ 179,636,860	\$ 136,068,696	75.75%	\$ 4,426,012
Governmental Library Fund	112,292	37,741	33.61%	107,892	36,786	34.10%	955
Public Library Fund	13,798,900	7,733,037	56.04%	13,403,900	7,499,830	55.95%	233,207
Solid Waste Fund	4,230,000	1,973,138	46.65%	4,054,563	1,833,303	45.22%	139,835
Hotel/Motel Fund	8,000,000	4,494,035	56.18%	8,000,000	4,184,398	52.30%	309,637
Engineering and Public Works Fund	16,558,946	8,864,857	53.54%	15,382,946	8,781,825	57.09%	83,032
Debt Service Fund	70,270,986	54,210,707	77.15%	70,570,882	53,052,433	75.18%	1,158,274
General Purpose School Fund	484,530,000	342,918,301	70.77%	471,685,000	329,299,237	69.81%	13,619,064
Total Revenues and Operating Transfers In	\$ 782,082,466	\$ 560,726,524	71.70%	\$ 762,842,043	\$ 540,756,508	70.89%	\$ 19,970,016
Expenditures and Operating Transfers Out:							
General Fund	\$ 186,749,095	\$ 125,700,143	67.31%	\$ 184,705,003	\$ 120,192,928	65.07%	\$ 5,507,215
Governmental Library Fund	112,292	70,189	62.51%	107,892	62,520	57.95%	7,669
Public Library Fund	13,958,900	9,096,985	65.17%	13,754,539	8,868,256	64.48%	228,729
Solid Waste Fund	4,398,518	2,949,811	67.06%	4,201,772	2,963,515	70.53%	(13,704)
Hotel/Motel Fund	8,000,000	4,390,303	54.88%	8,650,000	4,577,874	52.92%	(187,571)
Engineering and Public Works Fund	16,708,652	9,364,440	56.05%	16,340,577	8,484,357	51.92%	880,083
Debt Service Fund	76,503,000	17,976,785	23.50%	75,500,000	18,307,735	24.25%	(330,950)
General Purpose School Fund	484,530,000	296,447,578	61.18%	472,485,268	266,191,899	56.34%	30,255,679
Total Expenditures and Operating Transfers Out	\$ 790,960,457	\$ 465,996,234	58.92%	\$ 775,745,051	\$ 429,649,084	55.39%	\$ 36,347,150

GENERAL FUND - SALES TAX ANALYSIS FY 2018-2019

Current Year Amounts				
Month Received	402100	402105	402110	Total
September (July)	\$711,572.26	\$0.00	\$914.43	\$712,486.69
October (August)	740,349.26	0.00	914.43	741,263.69
November (Sept)	705,272.01	0.00	914.43	706,186.44
December (Oct)	739,044.36	0.00	914.43	739,958.79
January (Nov)	701,737.85	0.00	914.43	702,652.28
February (Dec)	892,025.60	0.00	914.43	892,940.03
March (Jan)	667,987.32	0.00	914.43	668,901.75
April (Feb)				0.00
May (March)				0.00
June (April)				0.00
July (May)				0.00
August (June)				0.00
Total	\$5,157,988.66	\$0.00	\$6,401.01	\$5,164,389.67

Current Projections:

5,164,389.67 Actual Collections
 58.17% **weighted avg trend**
8,878,098.11 FY19 Projected
 8,878,098.11 FY19 Projected
 8,000,000.00 Budgeted revenue for FY19
878,098.11 Surplus (Deficit)

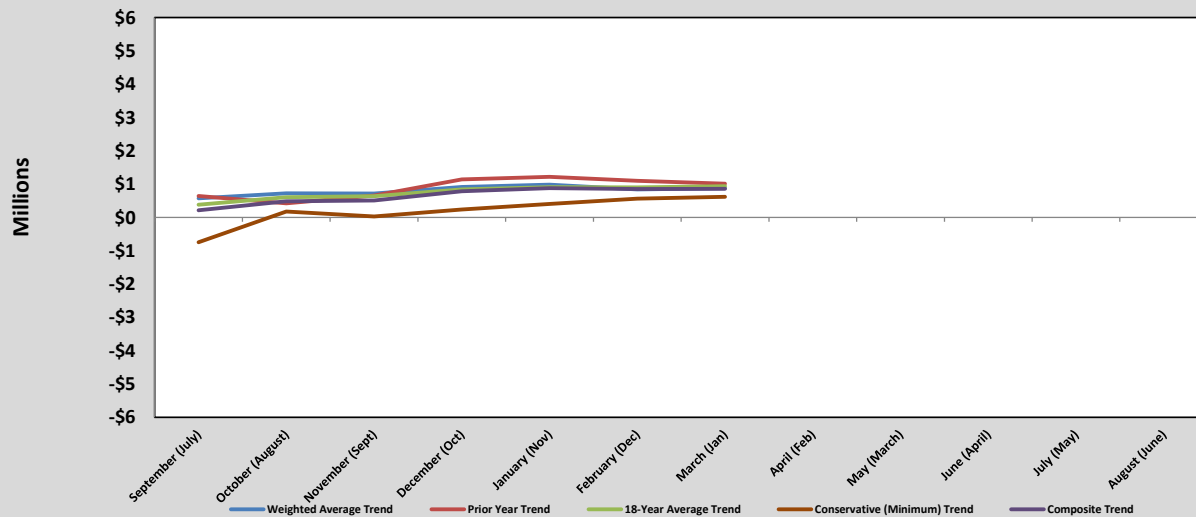
5,164,389.67 Actual Collections
 57.31% **prior year trend**
9,011,323.80 FY19 Projected
 9,011,323.80 FY19 Projected
 8,000,000.00 Budgeted revenue for FY19
1,011,323.80 Surplus (Deficit)

5,164,389.67 Actual Collections
 57.78% **18-year avg trend**
8,938,022.97 FY19 Projected
 8,938,022.97 FY19 Projected
 8,000,000.00 Budgeted revenue for FY19
938,022.97 Surplus (Deficit)

Projected Surplus (Deficit) as of Fiscal Year End Based on					
Date Collected	Weighted Average Trend	Prior Year Trend	18-Year Average Trend	Conservative (Minimum) Trend	Composite Trend
September (July)	573,847.05	646,683.13	382,196.35	(744,534.73)	214,547.95
October (August)	725,992.68	422,655.74	607,166.25	176,323.85	483,034.63
November (Sept)	716,452.06	653,593.03	639,747.28	26,521.07	509,078.36
December (Oct)	917,268.17	1,145,050.80	841,145.15	240,680.90	786,036.26
January (Nov)	983,909.95	1,218,392.76	910,580.98	403,424.05	879,076.93
February (Dec)	838,945.97	1,098,336.21	900,193.86	564,465.46	850,485.37
March (Jan)	878,098.11	1,011,323.80	938,022.97	618,807.86	861,563.18
April (Feb)					
May (March)					
June (April)					
July (May)					
August (June)					

5,164,389.67 Actual Collections
 59.92% **Conservative trend**
8,618,807.86 FY19 Projected
 8,618,807.86 FY19 Projected
 8,000,000.00 Budgeted revenue for FY19
618,807.86 Surplus (Deficit)
 8,861,563.18 Composite Projection
 8,000,000.00 Budgeted Revenue for FY19
861,563.18 Composite Surplus (Deficit)

SALES TAX PROJECTIONS AS OF FISCAL YEAR END 2018-2019



GENERAL PURPOSE SCHOOL FUND - SALES TAX ANALYSIS FY 2018-2019

Current Year Amounts				
Month Received	402100	402105	402110	Total
September (July)	\$11,102,326.33	\$0.00	\$4,099.14	\$11,106,425.47
October (August)	13,156,113.21	0.00	4,099.14	\$13,160,212.35
November (Sept)	13,011,999.02	0.00	4,099.14	\$13,016,098.16
December (Oct)	13,372,630.31	0.00	4,099.14	\$13,376,729.45
January (Nov)	13,412,789.54	0.00	4,099.14	\$13,416,888.68
February (Dec)	16,677,598.84	0.00	4,099.14	\$16,681,697.98
March (Jan)	11,825,329.39	0.00	4,099.14	\$11,829,428.53
April (Feb)				\$0.00
May (March)				\$0.00
June (April)				\$0.00
July (May)				\$0.00
August (June)				\$0.00
Total	\$92,558,786.64	\$0.00	\$28,693.98	\$92,587,480.62

Current Projections:

92,587,480.62	Actual Collections
58.80%	weighted avg trend
<u>157,461,701.73</u>	FY19 Projected
157,461,701.73	FY19 Projected
149,761,000.00	Budgeted revenue for FY19
<u>7,700,701.73</u>	Surplus (Deficit)

92,587,480.62	Actual Collections
58.28%	prior year trend
<u>158,866,644.85</u>	FY19 Projected
158,866,644.85	FY19 Projected
149,761,000.00	Budgeted revenue for FY19
<u>9,105,644.85</u>	Surplus (Deficit)

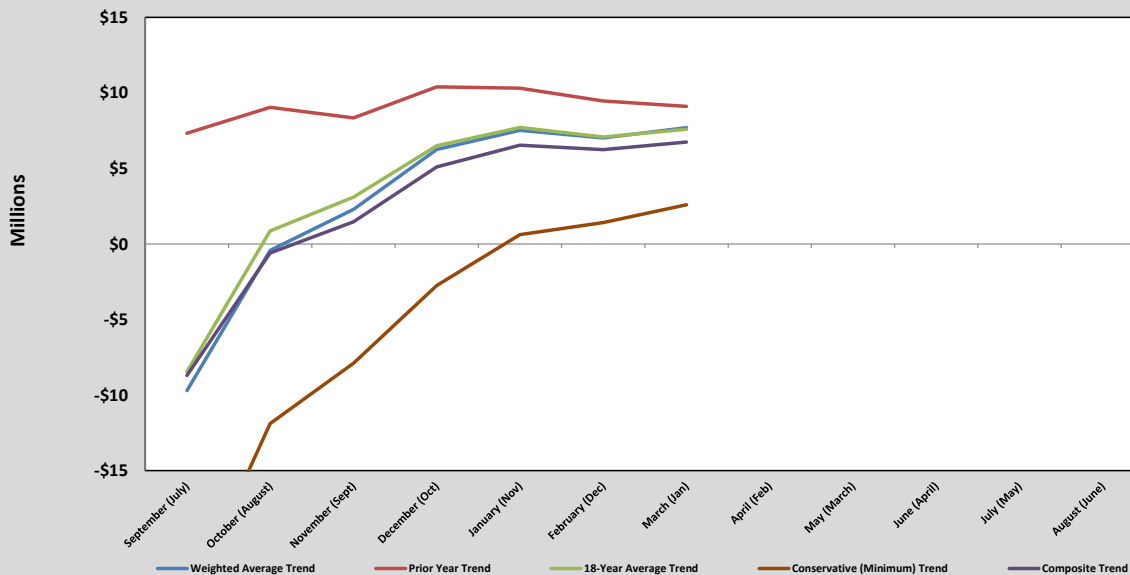
92,587,480.62	Actual Collections
58.84%	18-year avg trend
<u>157,354,657.75</u>	FY19 Projected
157,354,657.75	FY19 Projected
149,761,000.00	Budgeted revenue for FY19
<u>7,593,657.75</u>	Surplus (Deficit)

Projected Surplus (Deficit) as of Fiscal Year End Based on					
Date Collected	Weighted Average Trend	Prior Year Trend	18-Year Average Trend	Conservative (Minimum) Trend	Composite Trend
September (July)	(9,705,193.32)	7,331,298.02	(8,457,876.97)	(23,980,417.10)	(8,703,047.34)
October (August)	(427,844.18)	9,052,074.74	869,898.94	(11,882,376.02)	(597,061.63)
November (Sept)	2,289,309.87	8,350,687.79	3,099,746.13	(7,893,663.70)	1,461,520.02
December (Oct)	6,258,296.06	10,401,710.81	6,498,918.04	(2,751,524.00)	5,101,850.23
January (Nov)	7,520,183.38	10,309,832.15	7,713,451.00	617,676.63	6,540,285.79
February (Dec)	7,020,308.66	9,462,288.82	7,081,206.43	1,414,687.18	6,244,622.77
March (Jan)	7,700,701.73	9,105,644.85	7,593,657.75	2,596,216.75	6,749,055.27
April (Feb)					
May (March)					
June (April)					
July (May)					
August (June)					

92,587,480.62	Actual Collections
60.77%	Conservative trend
<u>152,357,216.75</u>	FY19 Projected
152,357,216.75	FY19 Projected
149,761,000.00	Budgeted revenue for FY19
<u>2,596,216.75</u>	Surplus (Deficit)

156,510,055.27	Composite Projection
149,761,000.00	Budgeted Revenue for FY19
<u>6,749,055.27</u>	Composite Surplus (Deficit)

SALES TAX PROJECTIONS AS OF FISCAL YEAR END 2018-2019



ENGINEERING & PUBLIC WORKS FUND - SALES TAX ANALYSIS FY 2018-2019

Current Year Amounts				
Month Received	402100	402105	402110	Total
September (July)	\$515,276.46	\$0.00	\$662.17	\$515,938.63
October (August)	536,114.98	0.00	662.17	\$536,777.15
November (Sept)	510,714.22	0.00	662.17	\$511,376.39
December (Oct)	535,170.05	0.00	662.17	\$535,832.22
January (Nov)	508,154.99	0.00	662.17	\$508,817.16
February (Dec)	645,949.57	0.00	662.17	\$646,611.74
March (Jan)	483,714.97	0.00	662.17	\$484,377.14
April (Feb)				\$0.00
May (March)				\$0.00
June (April)				\$0.00
July (May)				\$0.00
August (June)				\$0.00
Total	\$3,735,095.24	\$0.00	\$4,635.19	\$3,739,730.43

Current Projections:

3,739,730.43	Actual Collections
58.19%	weighted avg trend
<u>6,426,757.91</u>	FY19 Projected
6,426,757.91	FY19 Projected
5,650,000.00	Budgeted revenue for FY19
<u>776,757.91</u>	Surplus (Deficit)

3,739,730.43	Actual Collections
57.56%	prior year trend
<u>6,497,099.43</u>	FY19 Projected
6,497,099.43	FY19 Projected
5,650,000.00	Budgeted revenue for FY19
<u>847,099.43</u>	Surplus (Deficit)

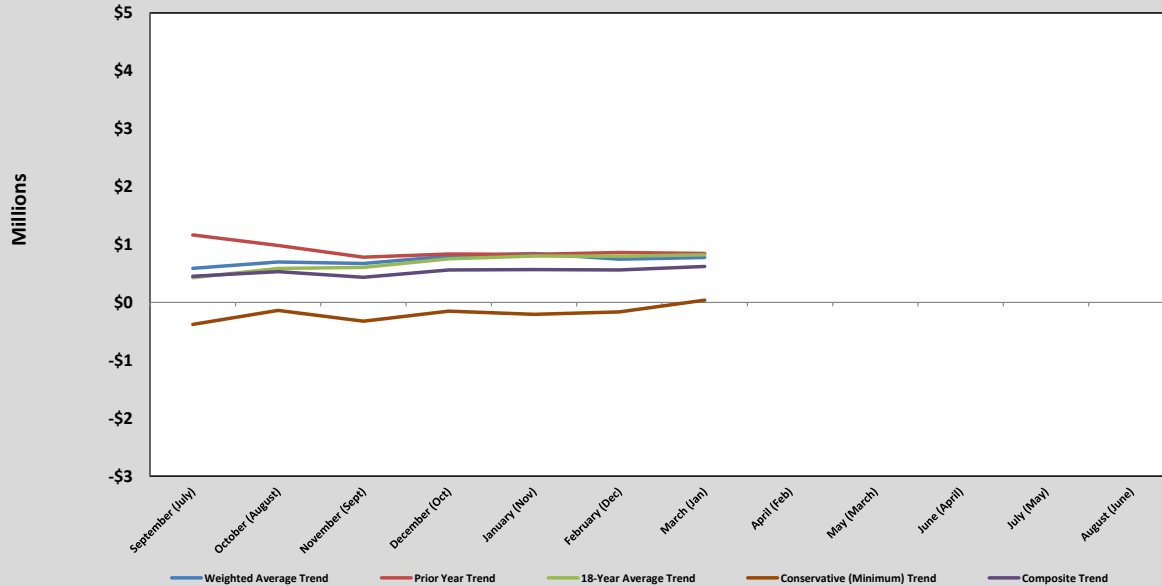
3,739,730.43	Actual Collections
57.78%	18-year avg trend
<u>6,472,361.42</u>	FY19 Projected
6,472,361.42	FY19 Projected
5,650,000.00	Budgeted revenue for FY19
<u>822,361.42</u>	Surplus (Deficit)

Projected Surplus (Deficit) as of Fiscal Year End Based on					
Date Collected	Weighted Average Trend	Prior Year Trend	18-Year Average Trend	Conservative (Minimum) Trend	Composite Trend
September (July)	588,677.51	1,165,569.75	427,015.67	(379,942.49)	450,330.11
October (August)	699,311.10	983,369.75	586,467.89	(138,399.06)	532,687.42
November (Sept)	672,118.71	781,300.04	606,368.68	(322,710.59)	434,269.21
December (Oct)	799,399.23	835,251.36	752,208.51	(149,936.12)	559,230.74
January (Nov)	844,253.30	829,735.59	802,489.61	(206,048.52)	567,607.50
February (Dec)	748,100.02	863,311.90	797,520.88	(162,216.30)	561,679.12
March (Jan)	776,757.91	847,099.43	822,361.42	38,668.13	621,221.72
April (Feb)					
May (March)					
June (April)					
July (May)					
August (June)					

3,739,730.43	Actual Collections
65.74%	Conservative trend
<u>5,688,668.13</u>	FY19 Projected
5,688,668.13	FY19 Projected
5,650,000.00	Budgeted revenue for FY19
<u>38,668.13</u>	Surplus (Deficit)

6,271,221.72	Composite Projection
5,650,000.00	Budgeted Revenue for FY19
<u>621,221.72</u>	Composite Surplus (Deficit)

SALES TAX PROJECTIONS AS OF FISCAL YEAR END 2018-2019



GENERAL FUND - 101 (PROPERTY TAX TREND ANALYSIS)

Month Received	FY 07		FY 08		FY09		FY10		FY11		FY12	
	Amount	Cumulative % Collected	Amount	Cumulative % Collected	Amount	Cumulative % Collected	Amount	Cumulative % Collected	Amount	Cumulative % Collected	Amount	Cumulative % Collected
September	220,163.25	0.23%	112,595.01	0.12%	100,157.26	0.11%	\$156,497.04	0.17%	\$719,297.48	0.76%	\$592,898.61	0.61%
October	9,271,616.17	9.89%	8,462,091.61	9.44%	7,627,409.75	8.46%	7,268,441.50	7.97%	7,845,112.35	9.02%	8,391,386.29	9.31%
November	6,179,493.75	16.33%	8,715,143.12	19.04%	4,188,560.26	13.04%	5,205,049.45	13.56%	4,752,549.81	14.03%	4,938,267.41	14.43%
December	33,519,618.24	51.26%	28,703,573.80	50.66%	29,713,823.72	45.57%	34,987,350.43	51.11%	35,203,148.44	51.12%	36,428,000.86	52.17%
January	7,622,518.83	59.21%	7,343,473.60	58.75%	12,025,356.26	58.73%	6,878,666.13	58.49%	8,197,783.62	59.76%	7,304,379.65	59.74%
February	26,390,943.01	86.71%	26,920,102.96	88.40%	28,853,246.19	90.31%	24,863,419.63	85.18%	27,389,296.46	88.62%	30,201,562.97	91.04%
March	9,588,570.46	96.70%	7,738,626.23	96.92%	6,091,195.70	96.98%	10,950,519.64	96.93%	8,356,471.04	97.43%	6,157,626.52	97.42%
April	1,319,606.29	98.08%	1,082,442.75	98.11%	1,001,743.36	98.08%	1,328,327.31	98.36%	825,439.78	98.30%	906,056.21	98.35%
May	829,942.78	98.94%	812,330.80	99.01%	498,786.10	98.62%	536,567.05	98.94%	483,386.77	98.80%	692,714.80	99.07%
June	405,932.93	99.36%	388,168.89	99.44%	487,919.00	99.16%	439,732.86	99.41%	414,590.19	99.24%	410,344.03	99.50%
July	299,841.33	99.68%	296,864.48	99.76%	495,970.71	99.70%	346,586.20	99.78%	439,204.19	99.70%	250,773.74	99.76%
August	310,253.04	100.00%	214,215.54	100.00%	275,109.35	100.00%	204,446.59	100.00%	280,912.93	100.00%	234,162.85	100.00%
Actual	95,958,500.08		90,789,628.79		91,359,277.66		93,165,603.83		94,907,193.06		96,508,173.94	
<i>Budgeted</i>	<i>0.00</i>		<i>0.00</i>		<i>0.00</i>		<i>0.00</i>		<i>94,575,000.00</i>		<i>95,836,000.00</i>	
Surplus (Deficit)	95,958,500.08		90,789,628.79		91,359,277.66		93,165,603.83		332,193.06		672,173.94	
			-5.39%		0.63%		1.98%		1.87%		1.69%	

Month Received	FY 13		FY 14		FY 15		FY 16		FY 17		FY 18	
	Amount	Cumulative % Collected	Amount	Cumulative % Collected	Amount	Cumulative % Collected	Amount	Cumulative % Collected	Amount	Cumulative % Collected	Amount	Cumulative % Collected
September	560,617.70	0.57%	503,528.04	0.50%	519,702.34	0.51%	574,535.90	0.54%	700,112.06	0.65%	750,884.15	0.69%
October	9,251,790.68	9.92%	9,544,179.40	10.00%	10,345,795.20	10.57%	10,904,347.47	10.85%	11,528,679.69	11.42%	13,153,171.10	12.70%
November	6,448,933.15	16.44%	7,346,766.48	17.32%	5,148,624.24	15.58%	6,407,027.15	16.91%	12,481,252.99	23.07%	6,914,184.42	19.01%
December	35,010,559.36	51.84%	35,589,713.41	52.75%	35,110,180.67	49.75%	37,533,751.93	52.40%	32,064,012.91	53.00%	39,026,263.66	54.66%
January	8,008,964.48	59.93%	6,339,569.33	59.06%	9,865,043.15	59.35%	7,492,581.76	59.48%	9,365,042.63	61.74%	8,997,947.25	62.88%
February	33,992,137.79	94.30%	37,430,644.06	96.32%	36,840,316.14	95.20%	37,968,132.11	95.38%	37,003,124.79	96.29%	36,692,441.44	96.39%
March	3,482,949.97	97.82%	1,558,179.97	97.87%	2,323,352.23	97.46%	2,848,582.11	98.07%	2,354,826.01	98.48%	1,995,581.40	98.21%
April	933,131.29	98.76%	1,027,646.37	98.89%	970,679.84	98.41%	876,808.71	98.90%	566,111.90	99.01%	790,054.00	98.94%
May	523,825.96	99.29%	389,820.48	99.28%	617,241.74	99.01%	431,089.50	99.31%	379,267.01	99.37%	522,479.54	99.41%
June	274,360.67	99.57%	319,922.92	99.60%	349,409.84	99.35%	309,250.99	99.60%	272,246.95	99.62%	304,719.92	99.69%
July	210,543.33	99.78%	237,570.02	99.84%	389,035.79	99.72%	216,131.49	99.81%	258,574.23	99.86%	137,378.17	99.82%
August	214,364.05	100.00%	163,120.83	100.00%	283,273.79	100.00%	205,825.54	100.00%	147,921.99	100.00%	200,050.54	100.00%
Actual	98,912,178.43		100,450,661.31		102,762,654.97		105,768,064.66		107,121,173.16		109,485,155.59	
<i>Budgeted</i>	<i>97,873,000.00</i>		<i>99,910,000.00</i>		<i>102,720,000.00</i>		<i>104,954,000.00</i>		<i>107,088,000.00</i>		<i>109,804,000.00</i>	
Surplus (Deficit)	1,039,178.43		540,661.31		42,654.97		814,064.66		33,173.16		(318,844.41)	
	2.49%		1.56%		2.30%		2.92%		1.28%		2.21%	

Month Received	FY 19	
	Amount	Cumulative % Collected
September	938,165.94	0.87%
October	12,725,936.74	12.72%
November	7,270,104.29	19.48%
December	38,807,520.62	55.60%
January	10,267,002.97	65.16%
February	37,434,582.38	100.00%
March		100.00%
April		100.00%
May		100.00%
June		100.00%
July		100.00%
August		100.00%
Actual	107,443,312.94	
<i>Budgeted</i>	<i>110,983,000.00</i>	
Surplus (Deficit)	(3,539,687.06)	

GENERAL PURPOSE SCHOOLS FUND - 141 (PROPERTY TAX TREND ANALYSIS)

Month Received	FY 07		FY 08		FY09		FY10		FY11		FY12	
	Amount	Cumulative % Collected	Amount	Cumulative % Collected	Amount	Cumulative % Collected	Amount	Cumulative % Collected	Amount	Cumulative % Collected	Amount	Cumulative % Collected
September	218,387.49	0.23%	122,559.52	0.12%	111,993.99	0.11%	\$174,244.07	0.17%	\$800,866.99	0.76%	\$660,134.32	0.61%
October	9,196,834.53	9.89%	9,210,975.66	9.44%	8,528,828.18	8.46%	8,092,694.66	7.97%	8,734,760.92	9.02%	9,342,983.21	9.31%
November	6,129,652.09	16.33%	9,486,421.89	19.04%	4,683,570.43	13.04%	5,795,310.57	13.56%	5,291,496.73	14.03%	5,498,275.01	14.43%
December	33,249,260.62	51.26%	31,243,802.57	50.66%	33,225,446.87	45.57%	38,964,973.18	51.12%	39,195,243.05	51.12%	40,558,995.72	52.17%
January	7,561,038.23	59.21%	7,993,361.42	58.75%	13,446,530.45	58.73%	7,658,718.11	58.50%	9,127,425.69	59.76%	8,132,708.25	59.74%
February	26,178,082.81	86.71%	29,302,496.89	88.40%	32,263,165.03	90.31%	27,682,972.08	85.18%	30,495,287.48	88.62%	33,626,469.65	91.04%
March	9,511,232.37	96.70%	8,423,484.53	96.92%	6,811,062.12	96.98%	12,192,326.47	96.94%	9,304,108.54	97.43%	6,855,911.46	97.42%
April	1,308,962.80	98.08%	1,178,237.52	98.11%	1,120,130.85	98.08%	1,478,961.79	98.36%	919,046.00	98.30%	1,008,804.48	98.35%
May	823,248.74	98.94%	884,221.01	99.01%	557,733.37	98.62%	597,414.63	98.94%	538,203.63	98.80%	771,269.82	99.07%
June	402,658.81	99.36%	422,521.33	99.44%	545,581.99	99.16%	489,599.28	99.41%	461,605.38	99.24%	456,877.73	99.50%
July	297,422.91	99.68%	323,136.60	99.76%	554,585.25	99.70%	385,889.64	99.78%	489,010.66	99.70%	279,211.88	99.76%
August	307,750.64	100.00%	233,173.33	100.00%	307,622.18	100.00%	227,631.17	100.00%	312,768.92	100.00%	260,717.27	100.00%
Actual	95,184,532.04		98,824,392.27		102,156,250.71		103,740,735.65		105,669,823.99		107,452,358.80	
<i>Budgeted</i>	0.00		0.00		0.00		0.00		108,000,000.00		106,704,000.00	
Surplus (Deficit)	95,184,532.04		98,824,392.27		102,156,250.71		103,740,735.65		(2,330,176.01)		748,358.80	
			3.82%		3.37%		1.55%		1.86%		1.69%	

Month Received	FY 13		FY 14		FY 15		FY 16		FY 17		FY 18	
	Amount	Cumulative % Collected	Amount	Cumulative % Collected	Amount	Cumulative % Collected	Amount	Cumulative % Collected	Amount	Cumulative % Collected	Amount	Cumulative % Collected
September	624,192.64	0.57%	560,628.95	0.50%	476,393.50	0.51%	521,227.28	0.54%	635,151.77	0.65%	674,950.08	0.69%
October	10,300,958.82	9.92%	10,626,504.95	10.00%	9,483,639.33	10.57%	9,892,581.83	10.85%	10,458,985.06	11.42%	11,823,040.66	12.70%
November	7,180,252.71	16.44%	8,179,901.83	17.32%	4,719,569.12	15.58%	5,812,547.75	16.91%	11,323,173.36	23.07%	6,214,979.08	19.01%
December	38,980,814.05	51.84%	39,625,645.10	52.75%	32,184,311.01	49.75%	34,051,163.00	52.40%	29,088,936.55	53.00%	35,079,685.20	54.66%
January	8,917,194.15	59.93%	7,058,486.86	59.06%	9,042,950.26	59.35%	6,797,378.64	59.48%	8,496,102.20	61.74%	8,088,018.88	62.88%
February	37,846,901.81	94.30%	41,675,340.30	96.32%	33,770,267.54	95.20%	34,445,238.94	95.38%	33,569,770.37	96.29%	32,981,873.59	96.39%
March	3,877,922.17	97.82%	1,734,880.05	97.87%	2,129,738.14	97.46%	2,584,274.92	98.07%	2,136,332.23	98.48%	1,793,775.78	98.21%
April	1,038,949.89	98.76%	1,144,183.13	98.89%	889,789.25	98.41%	795,763.40	98.90%	513,584.91	99.01%	710,158.83	98.94%
May	583,228.68	99.29%	434,026.74	99.28%	565,804.53	99.01%	391,090.63	99.31%	344,076.51	99.37%	469,643.19	99.41%
June	305,473.62	99.57%	356,202.70	99.60%	320,292.15	99.35%	280,556.97	99.60%	246,986.37	99.62%	273,904.74	99.69%
July	234,419.27	99.78%	264,510.85	99.84%	356,615.93	99.72%	196,077.62	99.81%	234,582.31	99.86%	123,485.62	99.82%
August	238,673.27	100.00%	181,619.01	100.00%	259,667.44	100.00%	186,727.92	100.00%	134,196.97	100.00%	179,820.17	100.00%
Actual	110,128,981.08		111,841,930.47		94,199,038.20		95,954,628.90		97,181,878.61		98,413,335.82	
<i>Budgeted</i>	108,972,000.00		111,240,000.00		94,160,000.00		95,216,000.00		97,152,000.00		99,616,000.00	
Surplus (Deficit)	1,156,981.08		601,930.47		39,038.20		738,628.90		29,878.61		(1,202,664.18)	
	2.49%		1.56%		-15.77%		1.86%		1.28%			

Month Received	FY 19	
	Amount	Cumulative % Collected
September	843,292.77	0.87%
October	11,439,010.88	12.72%
November	6,534,906.11	19.48%
December	34,883,062.80	55.60%
January	9,228,739.79	65.16%
February	33,648,964.58	100.00%
March		100.00%
April		100.00%
May		100.00%
June		100.00%
July		100.00%
August		100.00%
Actual	96,577,976.93	
<i>Budgeted</i>	99,760,000.00	
Surplus (Deficit)	(3,182,023.07)	

DEBT SERVICE - 151 (PROPERTY TAX TREND ANALYSIS)

Month Received	FY 07		FY 08		FY09		FY10		FY11		FY12	
	Amount	Cumulative % Collected	Amount	Cumulative % Collected	Amount	Cumulative % Collected	Amount	Cumulative % Collected	Amount	Cumulative % Collected	Amount	Cumulative % Collected
September	39,061.00	0.23%	32,881.60	0.12%	32,778.73	0.11%	\$50,014.54	0.17%	\$229,878.67	0.76%	\$189,483.14	0.61%
October	1,644,954.75	9.89%	2,471,220.67	9.44%	2,496,242.85	8.46%	2,322,904.90	7.97%	2,507,201.84	9.02%	2,681,784.30	9.31%
November	1,096,355.52	16.33%	2,545,120.38	19.04%	1,370,801.35	13.04%	1,663,470.07	13.56%	1,518,856.72	14.03%	1,578,209.79	14.43%
December	5,946,995.03	51.26%	8,382,426.95	50.66%	9,724,522.81	45.57%	11,181,528.75	51.11%	11,250,495.15	51.12%	11,641,943.00	52.17%
January	1,352,374.64	59.21%	2,144,545.88	58.75%	3,935,570.61	58.73%	2,198,337.46	58.49%	2,619,911.26	59.76%	2,334,390.29	59.74%
February	4,682,237.30	86.71%	7,861,592.36	88.40%	9,442,879.29	90.31%	7,946,044.44	85.18%	8,753,283.75	88.62%	9,652,049.72	91.04%
March	1,701,188.26	96.70%	2,259,943.99	96.92%	1,993,481.96	96.98%	3,499,651.98	96.93%	2,670,625.80	97.43%	1,967,902.02	97.42%
April	234,122.36	98.08%	316,110.37	98.11%	327,843.24	98.08%	424,517.14	98.36%	263,800.46	98.30%	289,564.49	98.35%
May	147,247.07	98.94%	237,228.42	99.01%	163,239.06	98.62%	171,480.26	98.94%	154,484.50	98.80%	221,383.16	99.07%
June	72,019.95	99.36%	113,358.61	99.44%	159,682.56	99.16%	140,533.24	99.41%	132,497.94	99.24%	131,140.93	99.50%
July	53,197.35	99.68%	86,694.60	99.76%	162,317.66	99.70%	110,764.70	99.78%	140,364.29	99.70%	80,144.20	99.76%
August	55,044.58	100.00%	62,558.28	100.00%	90,035.77	100.00%	65,338.63	100.00%	89,776.32	100.00%	74,835.58	100.00%
Actual	17,024,797.81		26,513,682.11		29,899,395.89		29,774,586.11		30,331,176.70		30,842,830.62	
<i>Budgeted</i>	<i>0.00</i>		<i>0.00</i>		<i>0.00</i>		<i>0.00</i>		<i>30,225,000.00</i>		<i>30,628,000.00</i>	
Surplus (Deficit)	17,024,797.81		26,513,682.11		29,899,395.89		29,774,586.11		106,176.70		214,830.62	
			55.74%		12.77%		-0.42%		1.87%		1.69%	

Month Received	FY 13		FY 14		FY 15		FY 16		FY 17		FY 18	
	Amount	Cumulative % Collected	Amount	Cumulative % Collected	Amount	Cumulative % Collected	Amount	Cumulative % Collected	Amount	Cumulative % Collected	Amount	Cumulative % Collected
September	179,166.53	0.57%	160,921.42	0.50%	259,851.81	0.51%	278,382.73	0.54%	339,228.75	0.65%	362,785.80	0.69%
October	2,956,759.03	9.92%	3,050,202.83	10.00%	5,172,910.12	10.57%	5,283,537.44	10.85%	5,586,048.21	11.42%	6,354,886.69	12.70%
November	2,061,000.07	16.44%	2,347,936.61	17.32%	2,574,318.34	15.58%	3,104,428.55	16.91%	6,047,603.27	23.07%	3,340,552.50	19.01%
December	11,188,946.04	51.84%	11,374,036.57	52.75%	17,555,132.75	49.75%	18,186,414.54	52.40%	15,536,134.84	53.00%	18,855,337.76	54.66%
January	2,559,566.98	59.93%	2,026,048.72	59.06%	4,932,533.49	59.35%	3,630,417.72	59.48%	4,537,690.43	61.74%	4,347,311.75	62.88%
February	10,863,470.98	94.30%	11,962,375.46	96.32%	18,420,202.57	95.32%	18,396,886.90	95.38%	17,929,307.15	96.29%	17,727,763.57	96.39%
March	1,113,108.15	97.82%	497,975.22	97.87%	1,161,678.95	97.46%	1,380,237.59	98.07%	1,140,995.49	98.48%	964,154.83	98.21%
April	298,217.32	98.76%	328,423.16	98.89%	485,341.07	98.41%	424,844.49	98.90%	274,301.01	99.01%	381,710.50	98.94%
May	167,408.37	99.29%	124,581.85	99.28%	308,621.62	99.01%	208,877.93	99.31%	183,768.12	99.37%	252,433.29	99.41%
June	87,682.29	99.57%	102,243.46	99.60%	174,705.34	99.35%	149,842.91	99.60%	131,913.14	99.62%	147,223.83	99.69%
July	67,287.07	99.78%	75,924.49	99.84%	194,518.33	99.72%	104,723.28	99.81%	125,288.28	99.86%	66,373.53	99.82%
August	68,508.00	100.00%	52,131.41	100.00%	141,637.20	100.00%	99,729.66	100.00%	71,673.39	100.00%	96,653.39	100.00%
Actual	31,611,120.83		32,102,801.20		51,381,451.59		51,248,323.74		51,903,952.08		52,897,187.44	
<i>Budgeted</i>	<i>31,279,000.00</i>		<i>31,930,000.00</i>		<i>51,360,000.00</i>		<i>50,854,000.00</i>		<i>51,888,000.00</i>		<i>53,204,000.00</i>	
Surplus (Deficit)	332,120.83		172,801.20		21,451.59		394,323.74		15,952.08		(306,812.56)	
	2.49%		1.56%		60.05%		-0.26%		1.28%		1.91%	

Month Received	FY 19	
	Amount	Cumulative % Collected
September	453,270.01	0.87%
October	6,148,470.62	12.72%
November	3,512,513.35	19.48%
December	18,749,653.21	55.60%
January	4,960,449.48	65.16%
February	18,086,325.18	100.00%
March		100.00%
April		100.00%
May		100.00%
June		100.00%
July		100.00%
August		100.00%
Actual	51,910,681.85	
<i>Budgeted</i>	<i>53,621,000.00</i>	
Surplus (Deficit)	(1,710,318.15)	

HOTEL/MOTEL FUND - HOTEL/MOTEL TAX ANALYSIS FY 2018-2019

Current Year Amounts				
Month	401100			Total
Received				
September (July)	\$758,877.78	\$0.00	\$0.00	\$758,877.78
October (August)	829,062.21	0.00	0.00	829,062.21
November (Sept)	840,456.99	0.00	0.00	840,456.99
December (Oct)	864,639.56	0.00	0.00	864,639.56
January (Nov)	688,131.03	0.00	0.00	688,131.03
February (Dec)	512,866.97	0.00	0.00	512,866.97
March (Jan)	603,559.02	0.00	0.00	603,559.02
April (Feb)		0.00	0.00	0.00
May (March)		0.00	0.00	0.00
June (April)		0.00	0.00	0.00
July (May)		0.00	0.00	0.00
August (June)		0.00	0.00	0.00
Total	\$5,097,593.56	\$0.00	\$0.00	\$5,097,593.56

Projected Surplus (Deficit) as of Fiscal Year End Based on					
Date Collected	Weighted Average Trend	Prior Year Trend	13-Year Average Trend	Conservative (Minimum) Trend	Composite Trend
September (July)	321,028.29	813,911.50	330,162.24	(772,592.57)	173,127.36
October (August)	797,451.47	1,253,729.55	797,451.47	340,020.96	797,163.36
November (Sept)	984,080.58	1,188,032.46	990,732.99	568,796.68	932,910.68
December (Oct)	919,383.91	1,255,302.25	878,502.40	362,205.54	853,848.52
January (Nov)	898,452.32	972,656.23	854,910.08	497,689.58	805,927.05
February (Dec)	888,517.68	907,898.00	841,303.44	542,167.91	794,971.76
March (Jan)	908,761.90	950,998.35	857,677.78	622,451.89	834,972.48
April (Feb)					
May (March)					
June (April)					
July (May)					
August (June)					

Current Projections:

5,097,593.56 Actual Collections
 57.22% **weighted avg trend**
8,908,761.90 FY19 Projected

8,908,761.90 FY19 Projected
 8,000,000.00 Budgeted revenue for FY19
908,761.90 Surplus (Deficit)

5,097,593.56 Actual Collections
 56.95% **prior year trend**
8,950,998.35 FY19 Projected

8,950,998.35 FY19 Projected
 8,000,000.00 Budgeted revenue for FY19
950,998.35 Surplus (Deficit)

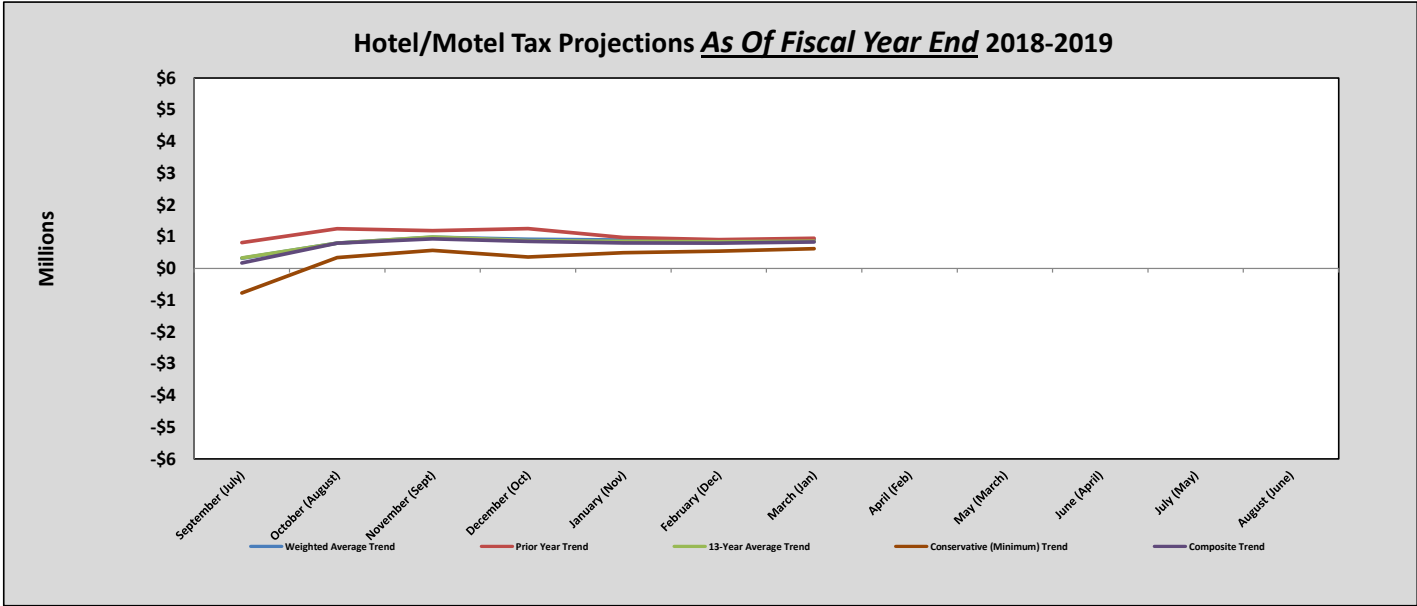
5,097,593.56 Actual Collections
 57.55% **13-year avg trend**
8,857,677.78 FY19 Projected

8,857,677.78 FY19 Projected
 8,000,000.00 Budgeted revenue for FY19
857,677.78 Surplus (Deficit)

5,097,593.56 Actual Collections
 59.12% **Conservative trend**
8,622,451.89 FY19 Projected

8,622,451.89 FY19 Projected
 8,000,000.00 Budgeted revenue for FY19
622,451.89 Surplus (Deficit)

8,834,972.48 **Composite Projection**
 8,000,000.00 Budgeted Revenue for FY19
834,972.48 **Composite Surplus (Deficit)**



Wheel Tax Report

	General Fund	GP Schools	Public Library	Monthly Total	Cumulative Total	% of Total Per Month	Variance by Monthly Total
FY'2017							
<i>Budget</i>	13,100,000.00						
July	45,942.84	138,055.41	950,392.95	1,134,391.20	1,134,391.20	8.37%	
August	53,397.65	160,456.64	1,104,606.17	1,318,460.46	2,452,851.66	9.72%	
September	46,656.86	140,200.99	965,163.45	1,152,021.30	3,604,872.96	8.50%	
October	46,442.29	139,556.21	960,724.65	1,146,723.15	4,751,596.11	8.46%	
November	34,825.30	104,647.88	720,410.77	859,883.95	5,611,480.06	6.34%	
December	43,155.02	129,678.18	892,722.90	1,065,556.10	6,677,036.16	7.86%	
January	39,768.66	119,502.38	822,671.28	981,942.32	7,658,978.48	7.24%	
February	43,674.51	131,239.21	903,469.28	1,078,383.00	8,737,361.48	7.95%	
March	55,405.89	166,491.27	1,146,149.39	1,368,046.55	10,105,408.03	10.09%	
April	44,040.84	132,340.02	911,047.38	1,087,428.24	11,192,836.27	8.02%	
May	44,416.31	133,468.27	918,814.42	1,096,699.00	12,289,535.27	8.09%	
June	51,423.40	154,524.13	1,063,765.95	1,269,713.48	13,559,248.75	9.36%	
FY'2018							
<i>Budget</i>	13,170,000.00						
July	47,511.85	142,770.19	982,850.16	1,173,132.20	1,173,132.20	8.54%	38,741.00
August	51,071.95	153,468.04	1,056,495.71	1,261,035.70	2,434,167.90	9.18%	(57,424.76)
September	45,708.15	137,350.16	945,537.89	1,128,596.20	3,562,764.10	8.22%	(23,425.10)
October	46,032.26	138,324.10	952,242.64	1,136,599.00	4,699,363.10	8.28%	(10,124.15)
November	40,488.28	121,664.79	837,557.58	999,710.65	5,699,073.75	7.28%	139,826.70
December	41,973.38	126,127.41	868,278.91	1,036,379.70	6,735,453.45	7.55%	(29,176.40)
January	39,552.45	118,852.68	818,198.67	976,603.80	7,712,057.25	7.11%	(5,338.52)
February	45,411.66	136,459.23	939,404.61	1,121,275.50	8,833,332.75	8.17%	42,892.50
March	48,012.07	144,273.30	993,197.78	1,185,483.15	10,018,815.90	8.63%	(182,563.40)
April	49,922.47	150,013.93	1,032,717.10	1,232,653.50	11,251,469.40	8.98%	145,225.26
May	51,105.44	153,568.69	1,057,188.55	1,261,862.68	12,513,332.08	9.19%	165,163.68
June	49,325.74	148,220.80	1,020,372.94	1,217,919.48	13,731,251.56	8.87%	(51,794.00)
FY'2019							
<i>Budget</i>	13,600,000.00						
July	53,826.56	161,745.50	1,113,478.89	1,329,050.95	1,329,050.95		155,918.75
August	54,453.43	163,629.19	1,126,446.47	1,344,529.09	2,673,580.04		83,493.39
September	42,018.39	126,262.68	869,210.13	1,037,491.20	3,711,071.24		(91,105.00)
October	53,466.34	160,663.06	1,106,027.18	1,320,156.58	5,031,227.82		183,557.58
November	40,639.06	122,117.88	840,676.75	1,003,433.69	6,034,661.51		3,723.04
December	34,770.27	104,482.51	719,272.38	858,525.16	6,893,186.67		(177,854.54)
January	46,453.41	139,589.62	960,954.67	1,146,997.70	8,040,184.37		170,393.90
February	46,975.15	141,157.42	971,747.61	1,159,880.18	9,200,064.55		38,604.68
March				-			
April				-			
May				-			
June				-			

**Howard G. Hogan
Chancery/Probate Courts**

	<u>FY19</u>	<u>FY18</u>	<u>Difference</u>
July	33,011.02	38,022.98	(5,011.96)
August	41,528.96	46,172.30	(4,643.34)
September	37,229.24	61,231.66	(24,002.42)
October	20,405.07	25,293.23	(4,888.16)
November	19,186.83	18,925.68	261.15
December	16,912.67	29,206.31	(12,293.64)
January	31,180.67	28,919.79	2,260.88
February	39,909.94	38,614.24	1,295.70
March			-
April			-
May			-
June			-
	<u>239,364.40</u>	<u>286,386.19</u>	<u>(47,021.79)</u>

MIKE HAMMOND
Criminal/Sessions Court

	<u>FY2019</u>	<u>FY2018</u>	<u>Difference</u>
July	240,307.10	245,410.01	(5,102.91)
August	251,248.60	234,858.90	16,389.70
September	226,752.04	239,007.71	(12,255.67)
October	249,222.71	247,848.15	1,374.56
November	238,938.64	251,413.92	(12,475.28)
December	193,809.31	239,113.19	(45,303.88)
January	262,430.28	284,322.12	(21,891.84)
February	284,394.99	294,375.31	(9,980.32)
March			-
April			-
May			-
June			-
	<u>1,947,103.67</u>	<u>2,036,349.31</u>	<u>(89,245.65)</u>

Charles D. Susano III
Knox County Circuit, Civil Sessions and Juvenile Court Clerk

	<u>FY19</u>	<u>FY18</u>	<u>Difference</u>
July	227,744.43	196,564.99	31,179.44
August	231,778.52	272,918.80	(41,140.28)
September	177,387.38	171,612.91	5,774.47
October	207,153.54	184,961.37	22,192.17
November	221,584.98	188,733.49	32,851.49
December	194,796.59	159,881.44	34,915.15
January	213,759.31	225,820.81	(12,061.50)
February	227,959.31	205,035.22	22,924.09
March			-
April			-
May			-
June			-
	<u>1,702,164.06</u>	<u>1,605,529.03</u>	<u>96,635.03</u>