



Monthly Financial Update

For the Month Ended April 30, 2019

Prepared by: Knox County Finance Dept.

Knox County Commission

TABLE OF CONTENTS

Summary Schedule – Operating Funds for Budget Report to the Citizenry.....1

General Fund – Sales Tax Analysis.....2

General Purpose School Fund – Sales Tax Analysis.....3

Engineering & Public Works Fund – Sales Tax Analysis.....4

General Fund – Property Tax Trend Analysis.....5

General Purpose School Fund – Property Tax Trend Analysis.....6

Debt Service – Property Tax Trend Analysis.....7

Hotel/Motel Fund.....8

Wheel Tax Report.....9

Chancery/Probate Courts.....10

Criminal/Sessions Court.....11

Circuit/Civil Sessions and Juvenile Court Clerk.....12

KNOX COUNTY, TENNESSEE

**Summary Schedule - Operating Funds
for the Budget Report to the Citizenry
For ten months ended April 30, 2019 and 2018**

	2018-2019			2017-2018			Year to Date Increase (Decrease)
	Annual Budget	Year to Date Actual	% of Annual Budget	Annual Budget	Year to Date Actual	% of Annual Budget	
Revenues and Operating Transfers In:							
General Fund	\$ 185,498,452	\$ 160,803,243	86.69%	\$ 179,693,860	\$ 155,664,037	86.63%	\$ 5,139,206
Governmental Library Fund	112,292	47,501	42.30%	107,892	47,713	44.22%	(212)
Public Library Fund	13,798,900	9,814,224	71.12%	13,403,900	9,489,562	70.80%	324,662
Solid Waste Fund	4,230,000	2,032,624	48.05%	4,054,563	2,004,503	49.44%	28,121
Hotel/Motel Fund	8,000,000	5,608,991	70.11%	8,000,000	5,210,718	65.13%	398,273
Engineering and Public Works Fund	16,558,946	11,217,640	67.74%	15,382,946	10,977,446	71.36%	240,194
Debt Service Fund	70,270,986	56,605,460	80.55%	70,695,882	68,603,218	97.04%	(11,997,758)
General Purpose School Fund	485,278,845	415,979,096	85.72%	471,685,000	398,627,597	84.51%	17,351,499
Total Revenues and Operating Transfers In	\$ 783,748,421	\$ 662,108,779	84.48%	\$ 763,024,043	\$ 650,624,794	85.27%	\$ 11,483,985
Expenditures and Operating Transfers Out:							
General Fund	\$ 193,447,872	\$ 156,386,671	80.84%	\$ 184,767,178	\$ 143,773,296	77.81%	\$ 12,613,375
Governmental Library Fund	112,292	88,919	79.19%	107,892	87,046	80.68%	1,873
Public Library Fund	14,201,953	11,653,507	82.06%	13,754,539	10,776,427	78.35%	877,080
Solid Waste Fund	4,398,518	3,918,817	89.09%	4,201,772	3,594,113	85.54%	324,704
Hotel/Motel Fund	8,130,000	5,105,530	62.80%	8,650,000	5,399,650	62.42%	(294,120)
Engineering and Public Works Fund	18,152,544	11,656,997	64.22%	16,340,577	10,037,958	61.43%	1,619,039
Debt Service Fund	77,750,000	33,169,343	42.66%	75,500,000	18,752,766	24.84%	14,416,577
General Purpose School Fund	491,121,145	377,391,841	76.84%	472,485,269	354,781,817	75.09%	22,610,024
Total Expenditures and Operating Transfers Out	\$ 807,314,324	\$ 599,371,625	74.24%	\$ 775,807,227	\$ 547,203,073	70.53%	\$ 52,168,552

GENERAL FUND - SALES TAX ANALYSIS FY 2018-2019

Current Year Amounts				
Month Received	402100	402105	402110	Total
September (July)	\$711,572.26	\$0.00	\$914.43	\$712,486.69
October (August)	740,349.26	0.00	914.43	741,263.69
November (Sept)	705,272.01	0.00	914.43	706,186.44
December (Oct)	739,044.36	0.00	914.43	739,958.79
January (Nov)	701,737.85	0.00	914.43	702,652.28
February (Dec)	892,025.60	0.00	914.43	892,940.03
March (Jan)	667,987.32	0.00	914.43	668,901.75
April (Feb)	632,574.30	0.00	914.43	633,488.73
May (March)	749,830.47	0.00	914.43	750,744.90
June (April)				0.00
July (May)				0.00
August (June)				0.00
Total	\$6,540,393.43	\$0.00	\$8,229.87	\$6,548,623.30

Current Projections:

6,548,623.30 Actual Collections
 73.97% **weighted avg trend**
8,853,080.03 FY19 Projected
 8,853,080.03 FY19 Projected
 8,000,000.00 Budgeted revenue for FY19
853,080.03 Surplus (Deficit)

6,548,623.30 Actual Collections
 74.52% **prior year trend**
8,787,739.26 FY19 Projected
 8,787,739.26 FY19 Projected
 8,000,000.00 Budgeted revenue for FY19
787,739.26 Surplus (Deficit)

6,548,623.30 Actual Collections
 73.53% **18-year avg trend**
8,906,056.44 FY19 Projected

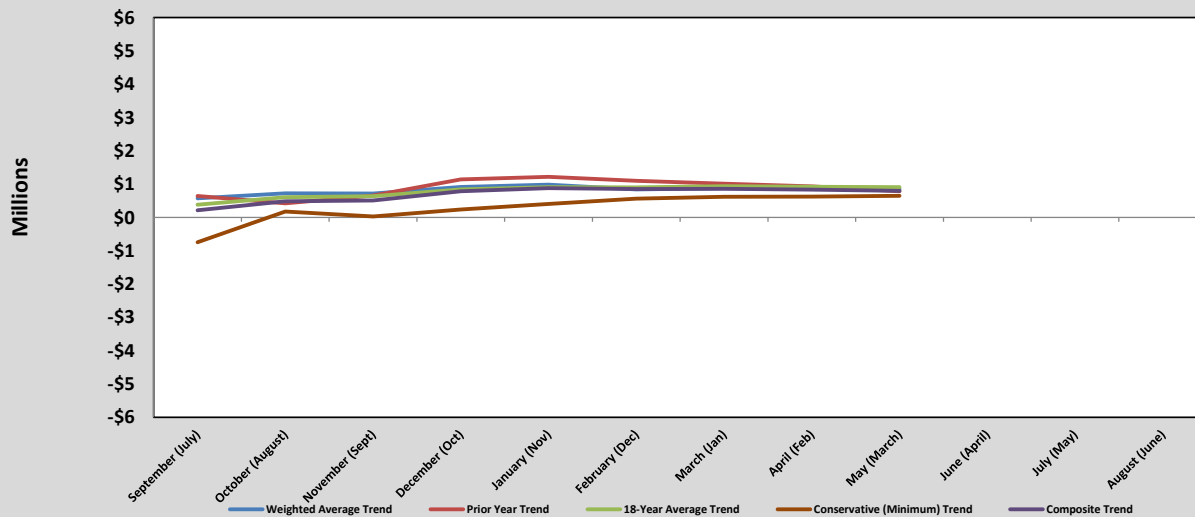
8,906,056.44 FY19 Projected
 8,000,000.00 Budgeted revenue for FY19
906,056.44 Surplus (Deficit)

6,548,623.30 Actual Collections
 75.72% **Conservative trend**
8,648,472.40 FY19 Projected
 8,648,472.40 FY19 Projected
 8,000,000.00 Budgeted revenue for FY19
648,472.40 Surplus (Deficit)

8,798,837.03 **Composite Projection**
 8,000,000.00 Budgeted Revenue for FY19
798,837.03 **Composite Surplus (Deficit)**

Projected Surplus (Deficit) as of Fiscal Year End Based on					
Date Collected	Weighted Average Trend	Prior Year Trend	18-Year Average Trend	Conservative (Minimum) Trend	Composite Trend
September (July)	573,847.05	646,683.13	382,196.35	(744,534.73)	214,547.95
October (August)	725,992.68	422,655.74	607,166.25	176,323.85	483,034.63
November (Sept)	716,452.06	653,593.03	639,747.28	26,521.07	509,078.36
December (Oct)	917,268.17	1,145,050.80	841,145.15	240,680.90	786,036.26
January (Nov)	983,909.95	1,218,392.76	910,580.98	403,424.05	879,076.93
February (Dec)	838,945.97	1,098,336.21	900,193.86	564,465.46	850,485.37
March (Jan)	878,098.11	1,011,323.80	938,022.97	618,807.86	861,563.18
April (Feb)	857,131.68	930,804.68	922,558.33	626,511.53	834,251.56
May (March)	853,080.03	787,739.26	906,056.44	648,472.40	798,837.03
June (April)					
July (May)					
August (June)					

SALES TAX PROJECTIONS AS OF FISCAL YEAR END 2018-2019



GENERAL PURPOSE SCHOOL FUND - SALES TAX ANALYSIS FY 2018-2019

Current Year Amounts				
Month Received	402100	402105	402110	Total
September (July)	\$11,102,326.33	\$0.00	\$4,099.14	\$11,106,425.47
October (August)	13,156,113.21	0.00	4,099.14	\$13,160,212.35
November (Sept)	13,011,999.02	0.00	4,099.14	\$13,016,098.16
December (Oct)	13,372,630.31	0.00	4,099.14	\$13,376,729.45
January (Nov)	13,412,789.54	0.00	4,099.14	\$13,416,888.68
February (Dec)	16,677,598.84	0.00	4,099.14	\$16,681,697.98
March (Jan)	11,825,329.39	0.00	4,099.14	\$11,829,428.53
April (Feb)	11,693,482.81	0.00	4,099.14	\$11,697,581.95
May (March)	13,483,920.45	0.00	4,099.14	\$13,488,019.59
June (April)				\$0.00
July (May)				\$0.00
August (June)				\$0.00
Total	\$117,736,189.90	\$0.00	\$36,892.26	\$117,773,082.16

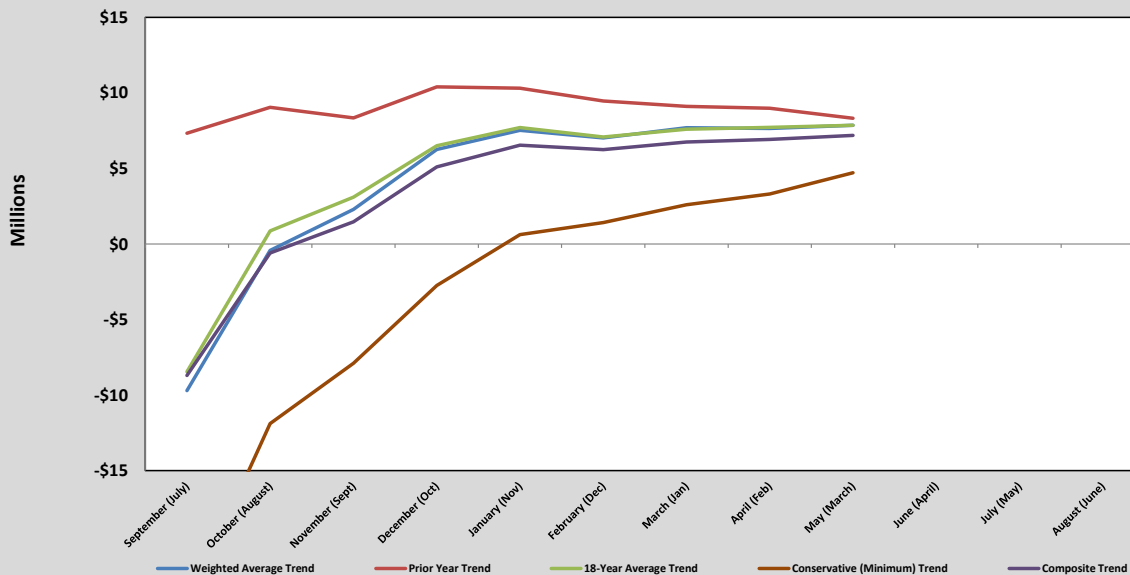
Current Projections:

117,773,082.16	Actual Collections
74.72%	weighted avg trend
<u>157,619,221.31</u>	FY19 Projected
157,619,221.31	FY19 Projected
149,761,000.00	Budgeted revenue for FY19
<u>7,858,221.31</u>	Surplus (Deficit)
<hr/>	
117,773,082.16	Actual Collections
74.50%	prior year trend
<u>158,084,674.04</u>	FY19 Projected
158,084,674.04	FY19 Projected
149,761,000.00	Budgeted revenue for FY19
<u>8,323,674.04</u>	Surplus (Deficit)
<hr/>	
117,773,082.16	Actual Collections
74.72%	18-year avg trend
<u>157,619,221.31</u>	FY19 Projected

Projected Surplus (Deficit) as of Fiscal Year End Based on					
Date Collected	Weighted Average Trend	Prior Year Trend	18-Year Average Trend	Conservative (Minimum) Trend	Composite Trend
September (July)	(9,705,193.32)	7,331,298.02	(8,457,876.97)	(23,980,417.10)	(8,703,047.34)
October (August)	(427,844.18)	9,052,074.74	869,898.94	(11,882,376.02)	(597,061.63)
November (Sept)	2,289,309.87	8,350,687.79	3,099,746.13	(7,893,663.70)	1,461,520.02
December (Oct)	6,258,296.06	10,401,710.81	6,498,918.04	(2,751,524.00)	5,101,850.23
January (Nov)	7,520,183.38	10,309,832.15	7,713,451.00	617,676.63	6,540,285.79
February (Dec)	7,020,308.66	9,462,288.82	7,081,206.43	1,414,687.18	6,244,622.77
March (Jan)	7,700,701.73	9,105,644.85	7,593,657.75	2,596,216.75	6,749,055.27
April (Feb)	7,650,415.20	8,992,330.14	7,721,728.13	3,306,756.60	6,917,807.52
May (March)	7,858,221.31	8,323,674.04	7,858,221.31	4,715,760.44	7,188,969.27
June (April)					
July (May)					
August (June)					

157,619,221.31	FY19 Projected
149,761,000.00	Budgeted revenue for FY19
<u>7,858,221.31</u>	Surplus (Deficit)
<hr/>	
117,773,082.16	Actual Collections
76.24%	Conservative trend
<u>154,476,760.44</u>	FY19 Projected
154,476,760.44	FY19 Projected
149,761,000.00	Budgeted revenue for FY19
<u>4,715,760.44</u>	Surplus (Deficit)
<hr/>	
156,949,969.27	Composite Projection
149,761,000.00	Budgeted Revenue for FY19
<u>7,188,969.27</u>	Composite Surplus (Deficit)

SALES TAX PROJECTIONS AS OF FISCAL YEAR END 2018-2019



ENGINEERING & PUBLIC WORKS FUND - SALES TAX ANALYSIS FY 2018-2019

Current Year Amounts				
Month Received	402100	402105	402110	Total
September (July)	\$515,276.46	\$0.00	\$662.17	\$515,938.63
October (August)	536,114.98	0.00	662.17	\$536,777.15
November (Sept)	510,714.22	0.00	662.17	\$511,376.39
December (Oct)	535,170.05	0.00	662.17	\$535,832.22
January (Nov)	508,154.99	0.00	662.17	\$508,817.16
February (Dec)	645,949.57	0.00	662.17	\$646,611.74
March (Jan)	483,714.97	0.00	662.17	\$484,377.14
April (Feb)	458,071.05	0.00	662.17	\$458,733.22
May (March)	542,980.69	0.00	662.17	\$543,642.86
June (April)				\$0.00
July (May)				\$0.00
August (June)				\$0.00
Total	\$4,736,146.98	\$0.00	\$5,959.53	\$4,742,106.51

Current Projections:

4,742,106.51	Actual Collections
73.89%	weighted avg trend
<u>6,417,792.00</u>	FY19 Projected
6,417,792.00	FY19 Projected
<u>5,650,000.00</u>	Budgeted revenue for FY19
<u>767,792.00</u>	Surplus (Deficit)

4,742,106.51	Actual Collections
72.90%	prior year trend
<u>6,504,947.20</u>	FY19 Projected
6,504,947.20	FY19 Projected
<u>5,650,000.00</u>	Budgeted revenue for FY19
<u>854,947.20</u>	Surplus (Deficit)

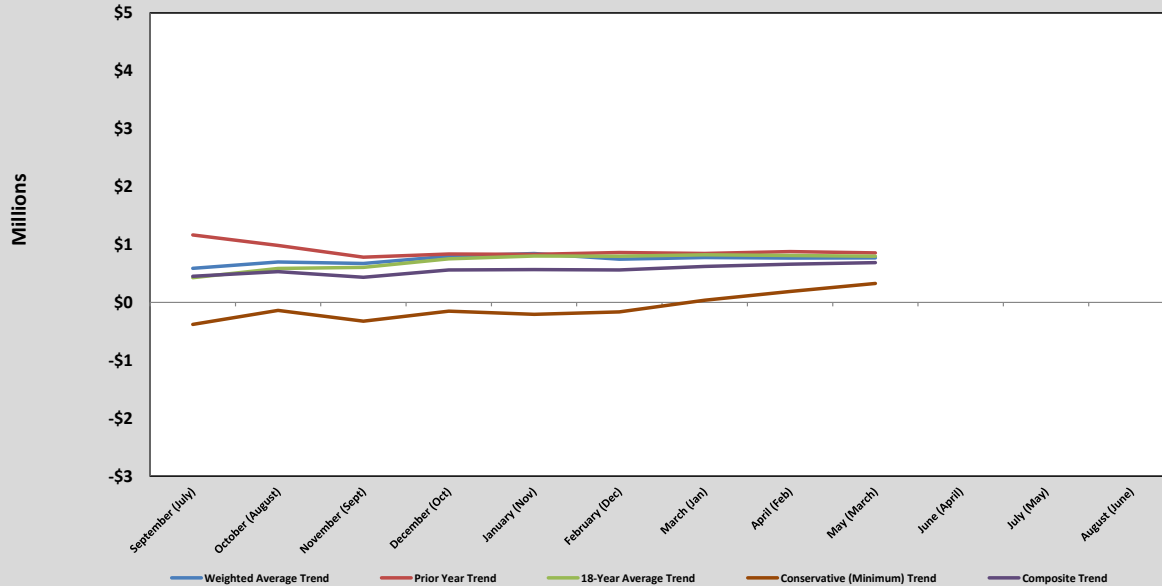
4,742,106.51	Actual Collections
73.53%	18-year avg trend
<u>6,449,213.26</u>	FY19 Projected
6,449,213.26	FY19 Projected
<u>5,650,000.00</u>	Budgeted revenue for FY19
<u>799,213.26</u>	Surplus (Deficit)

4,742,106.51	Actual Collections
79.33%	Conservative trend
<u>5,977,696.34</u>	FY19 Projected
5,977,696.34	FY19 Projected
<u>5,650,000.00</u>	Budgeted revenue for FY19
<u>327,696.34</u>	Surplus (Deficit)

6,337,412.20	Composite Projection
<u>5,650,000.00</u>	Budgeted Revenue for FY19
<u>687,412.20</u>	Composite Surplus (Deficit)

Projected Surplus (Deficit) as of Fiscal Year End Based on					
Date Collected	Weighted Average Trend	Prior Year Trend	18-Year Average Trend	Conservative (Minimum) Trend	Composite Trend
September (July)	588,677.51	1,165,569.75	427,015.67	(379,942.49)	450,330.11
October (August)	699,311.10	983,369.75	586,467.89	(138,399.06)	532,687.42
November (Sept)	672,118.71	781,300.04	606,368.68	(322,710.59)	434,269.21
December (Oct)	799,399.23	835,251.36	752,208.51	(149,936.12)	559,230.74
January (Nov)	844,253.30	829,735.59	802,489.61	(206,048.52)	567,607.50
February (Dec)	748,100.02	863,311.90	797,520.88	(162,216.30)	561,679.12
March (Jan)	776,757.91	847,099.43	822,361.42	38,668.13	621,221.72
April (Feb)	765,745.19	878,477.14	811,162.90	190,121.92	661,376.79
May (March)	767,792.00	854,947.20	799,213.26	327,696.34	687,412.20
June (April)					
July (May)					
August (June)					

SALES TAX PROJECTIONS AS OF FISCAL YEAR END 2018-2019



GENERAL FUND - 101 (PROPERTY TAX TREND ANALYSIS)

Month Received	FY 07		FY 08		FY09		FY10		FY11		FY12	
	Amount	Cumulative % Collected	Amount	Cumulative % Collected	Amount	Cumulative % Collected	Amount	Cumulative % Collected	Amount	Cumulative % Collected	Amount	Cumulative % Collected
September	220,163.25	0.23%	112,595.01	0.12%	100,157.26	0.11%	\$156,497.04	0.17%	\$719,297.48	0.76%	\$592,898.61	0.61%
October	9,271,616.17	9.89%	8,462,091.61	9.44%	7,627,409.75	8.46%	7,268,441.50	7.97%	7,845,112.35	9.02%	8,391,386.29	9.31%
November	6,179,493.75	16.33%	8,715,143.12	19.04%	4,188,560.26	13.04%	5,205,049.45	13.56%	4,752,549.81	14.03%	4,938,267.41	14.43%
December	33,519,618.24	51.26%	28,703,573.80	50.66%	29,713,823.72	45.57%	34,987,350.43	51.11%	35,203,148.44	51.12%	36,428,000.86	52.17%
January	7,622,518.83	59.21%	7,343,473.60	58.75%	12,025,356.26	58.73%	6,878,666.13	58.49%	8,197,783.62	59.76%	7,304,379.65	59.74%
February	26,390,943.01	86.71%	26,920,102.96	88.40%	28,853,246.19	90.31%	24,863,419.63	85.18%	27,389,296.46	88.62%	30,201,562.97	91.04%
March	9,588,570.46	96.70%	7,738,626.23	96.92%	6,091,195.70	96.98%	10,950,519.64	96.93%	8,356,471.04	97.43%	6,157,626.52	97.42%
April	1,319,606.29	98.08%	1,082,442.75	98.11%	1,001,743.36	98.08%	1,328,327.31	98.36%	825,439.78	98.30%	906,056.21	98.35%
May	829,942.78	98.94%	812,330.80	99.01%	498,786.10	98.62%	536,567.05	98.94%	483,386.77	98.80%	692,714.80	99.07%
June	405,932.93	99.36%	388,168.89	99.44%	487,919.00	99.16%	439,732.86	99.41%	414,590.19	99.24%	410,344.03	99.50%
July	299,841.33	99.68%	296,864.48	99.76%	495,970.71	99.70%	346,586.20	99.78%	439,204.19	99.70%	250,773.74	99.76%
August	310,253.04	100.00%	214,215.54	100.00%	275,109.35	100.00%	204,446.59	100.00%	280,912.93	100.00%	234,162.85	100.00%
Actual	95,958,500.08		90,789,628.79		91,359,277.66		93,165,603.83		94,907,193.06		96,508,173.94	
<i>Budgeted</i>	<i>0.00</i>		<i>0.00</i>		<i>0.00</i>		<i>0.00</i>		<i>94,575,000.00</i>		<i>95,836,000.00</i>	
Surplus (Deficit)	95,958,500.08		90,789,628.79		91,359,277.66		93,165,603.83		332,193.06		672,173.94	
			-5.39%		0.63%		1.98%		1.87%		1.69%	

Month Received	FY 13		FY 14		FY 15		FY 16		FY 17		FY 18	
	Amount	Cumulative % Collected	Amount	Cumulative % Collected	Amount	Cumulative % Collected	Amount	Cumulative % Collected	Amount	Cumulative % Collected	Amount	Cumulative % Collected
September	560,617.70	0.57%	503,528.04	0.50%	519,702.34	0.51%	574,535.90	0.54%	700,112.06	0.65%	750,884.15	0.69%
October	9,251,790.68	9.92%	9,544,179.40	10.00%	10,345,795.20	10.57%	10,904,347.47	10.85%	11,528,679.69	11.42%	13,153,171.10	12.70%
November	6,448,933.15	16.44%	7,346,766.48	17.32%	5,148,624.24	15.58%	6,407,027.15	16.91%	12,481,252.99	23.07%	6,914,184.42	19.01%
December	35,010,559.36	51.84%	35,589,713.41	52.75%	35,110,180.67	49.75%	37,533,751.93	52.40%	32,064,012.91	53.00%	39,026,263.66	54.66%
January	8,008,964.48	59.93%	6,339,569.33	59.06%	9,865,043.15	59.35%	7,492,581.76	59.48%	9,365,042.63	61.74%	8,997,947.25	62.88%
February	33,992,137.79	94.30%	37,430,644.06	96.32%	36,840,316.14	95.20%	37,968,132.11	95.38%	37,003,124.79	96.29%	36,692,441.44	96.39%
March	3,482,949.97	97.82%	1,558,179.97	97.87%	2,323,352.23	97.46%	2,848,582.11	98.07%	2,354,826.01	98.48%	1,995,581.40	98.21%
April	933,131.29	98.76%	1,027,646.37	98.89%	970,679.84	98.41%	876,808.71	98.90%	566,111.90	99.01%	790,054.00	98.94%
May	523,825.96	99.29%	389,820.48	99.28%	617,241.74	99.01%	431,089.50	99.31%	379,267.01	99.37%	522,479.54	99.41%
June	274,360.67	99.57%	319,922.92	99.60%	349,409.84	99.35%	309,250.99	99.60%	272,246.95	99.62%	304,719.92	99.69%
July	210,543.33	99.78%	237,570.02	99.84%	389,035.79	99.72%	216,131.49	99.81%	258,574.23	99.86%	137,378.17	99.82%
August	214,364.05	100.00%	163,120.83	100.00%	283,273.79	100.00%	205,825.54	100.00%	147,921.99	100.00%	200,050.54	100.00%
Actual	98,912,178.43		100,450,661.31		102,762,654.97		105,768,064.66		107,121,173.16		109,485,155.59	
<i>Budgeted</i>	<i>97,873,000.00</i>		<i>99,910,000.00</i>		<i>102,720,000.00</i>		<i>104,954,000.00</i>		<i>107,088,000.00</i>		<i>109,804,000.00</i>	
Surplus (Deficit)	1,039,178.43		540,661.31		42,654.97		814,064.66		33,173.16		(318,844.41)	
	2.49%		1.56%		2.30%		2.92%		1.28%		2.21%	

Month Received	FY 19	
	Amount	Cumulative % Collected
September	938,165.94	0.85%
October	12,725,936.74	12.34%
November	7,270,104.29	18.91%
December	38,807,520.62	53.97%
January	10,267,002.97	63.24%
February	37,434,582.38	97.06%
March	2,372,019.08	99.21%
April	879,748.74	100.00%
May		100.00%
June		100.00%
July		100.00%
August		100.00%
Actual	110,695,080.76	
<i>Budgeted</i>	<i>110,983,000.00</i>	
Surplus (Deficit)	(287,919.24)	

GENERAL PURPOSE SCHOOLS FUND - 141 (PROPERTY TAX TREND ANALYSIS)

Month Received	FY 07		FY 08		FY09		FY10		FY11		FY12	
	Amount	Cumulative % Collected	Amount	Cumulative % Collected	Amount	Cumulative % Collected	Amount	Cumulative % Collected	Amount	Cumulative % Collected	Amount	Cumulative % Collected
September	218,387.49	0.23%	122,559.52	0.12%	111,993.99	0.11%	\$174,244.07	0.17%	\$800,866.99	0.76%	\$660,134.32	0.61%
October	9,196,834.53	9.89%	9,210,975.66	9.44%	8,528,828.18	8.46%	8,092,694.66	7.97%	8,734,760.92	9.02%	9,342,983.21	9.31%
November	6,129,652.09	16.33%	9,486,421.89	19.04%	4,683,570.43	13.04%	5,795,310.57	13.56%	5,291,496.73	14.03%	5,498,275.01	14.43%
December	33,249,260.62	51.26%	31,243,802.57	50.66%	33,225,446.87	45.57%	38,964,973.18	51.12%	39,195,243.05	51.12%	40,558,995.72	52.17%
January	7,561,038.23	59.21%	7,993,361.42	58.75%	13,446,530.45	58.73%	7,658,718.11	58.50%	9,127,425.69	59.76%	8,132,708.25	59.74%
February	26,178,082.81	86.71%	29,302,496.89	88.40%	32,263,165.03	90.31%	27,682,972.08	85.18%	30,495,287.48	88.62%	33,626,469.65	91.04%
March	9,511,232.37	96.70%	8,423,484.53	96.92%	6,811,062.12	96.98%	12,192,326.47	96.94%	9,304,108.54	97.43%	6,855,911.46	97.42%
April	1,308,962.80	98.08%	1,178,237.52	98.11%	1,120,130.85	98.08%	1,478,961.79	98.36%	919,046.00	98.30%	1,008,804.48	98.35%
May	823,248.74	98.94%	884,221.01	99.01%	557,733.37	98.62%	597,414.63	98.94%	538,203.63	98.80%	771,269.82	99.07%
June	402,658.81	99.36%	422,521.33	99.44%	545,581.99	99.16%	489,599.28	99.41%	461,605.38	99.24%	456,877.73	99.50%
July	297,422.91	99.68%	323,136.60	99.76%	554,585.25	99.70%	385,889.64	99.78%	489,010.66	99.70%	279,211.88	99.76%
August	307,750.64	100.00%	233,173.33	100.00%	307,622.18	100.00%	227,631.17	100.00%	312,768.92	100.00%	260,717.27	100.00%
Actual	95,184,532.04		98,824,392.27		102,156,250.71		103,740,735.65		105,669,823.99		107,452,358.80	
<i>Budgeted</i>	<i>0.00</i>		<i>0.00</i>		<i>0.00</i>		<i>0.00</i>		<i>108,000,000.00</i>		<i>106,704,000.00</i>	
Surplus (Deficit)	95,184,532.04		98,824,392.27		102,156,250.71		103,740,735.65		(2,330,176.01)		748,358.80	
			3.82%		3.37%		1.55%		1.86%		1.69%	

Month Received	FY 13		FY 14		FY 15		FY 16		FY 17		FY 18	
	Amount	Cumulative % Collected	Amount	Cumulative % Collected	Amount	Cumulative % Collected	Amount	Cumulative % Collected	Amount	Cumulative % Collected	Amount	Cumulative % Collected
September	624,192.64	0.57%	560,628.95	0.50%	476,393.50	0.51%	521,227.28	0.54%	635,151.77	0.65%	674,950.08	0.69%
October	10,300,958.82	9.92%	10,626,504.95	10.00%	9,483,639.33	10.57%	9,892,581.83	10.85%	10,458,985.06	11.42%	11,823,040.66	12.70%
November	7,180,252.71	16.44%	8,179,901.83	17.32%	4,719,569.12	15.58%	5,812,547.75	16.91%	11,323,173.36	23.07%	6,214,979.08	19.01%
December	38,980,814.05	51.84%	39,625,645.10	52.75%	32,184,311.01	49.75%	34,051,163.00	52.40%	29,088,936.55	53.00%	35,079,685.20	54.66%
January	8,917,194.15	59.93%	7,058,486.86	59.06%	9,042,950.26	59.35%	6,797,378.64	59.48%	8,496,102.20	61.74%	8,088,018.88	62.88%
February	37,846,901.81	94.30%	41,675,340.30	96.32%	33,770,267.54	95.20%	34,445,238.94	95.38%	33,569,770.37	96.29%	32,981,873.59	96.39%
March	3,877,922.17	97.82%	1,734,880.05	97.87%	2,129,738.14	97.46%	2,584,274.92	98.07%	2,136,332.23	98.48%	1,793,775.78	98.21%
April	1,038,949.89	98.76%	1,144,183.13	98.89%	889,789.25	98.41%	795,763.40	98.90%	513,584.91	99.01%	710,158.83	98.94%
May	583,228.68	99.29%	434,026.74	99.28%	565,804.53	99.01%	391,090.63	99.31%	344,076.51	99.37%	469,643.19	99.41%
June	305,473.62	99.57%	356,202.70	99.60%	320,292.15	99.35%	280,556.97	99.60%	246,986.37	99.62%	273,904.74	99.69%
July	234,419.27	99.78%	264,510.85	99.84%	356,615.93	99.72%	196,077.62	99.81%	234,582.31	99.86%	123,485.62	99.82%
August	238,673.27	100.00%	181,619.01	100.00%	259,667.44	100.00%	186,727.92	100.00%	134,196.97	100.00%	179,820.17	100.00%
Actual	110,128,981.08		111,841,930.47		94,199,038.20		95,954,628.90		97,181,878.61		98,413,335.82	
<i>Budgeted</i>	<i>108,972,000.00</i>		<i>111,240,000.00</i>		<i>94,160,000.00</i>		<i>95,216,000.00</i>		<i>97,152,000.00</i>		<i>99,616,000.00</i>	
Surplus (Deficit)	1,156,981.08		601,930.47		39,038.20		738,628.90		29,878.61		(1,202,664.18)	
	2.49%		1.56%		-15.77%		1.86%		1.28%		1.27%	

Month Received	FY 19	
	Amount	Cumulative % Collected
September	843,292.77	0.85%
October	11,439,010.88	12.34%
November	6,534,906.11	18.91%
December	34,883,062.80	53.97%
January	9,228,739.79	63.24%
February	33,648,964.58	97.06%
March	2,132,145.78	99.21%
April	790,783.09	100.00%
May		100.00%
June		100.00%
July		100.00%
August		100.00%
Actual	99,500,905.80	
<i>Budgeted</i>	<i>99,760,000.00</i>	
Surplus (Deficit)	(259,094.20)	

DEBT SERVICE - 151 (PROPERTY TAX TREND ANALYSIS)

Month Received	FY 07		FY 08		FY09		FY10		FY11		FY12	
	Amount	Cumulative % Collected	Amount	Cumulative % Collected	Amount	Cumulative % Collected	Amount	Cumulative % Collected	Amount	Cumulative % Collected	Amount	Cumulative % Collected
September	39,061.00	0.23%	32,881.60	0.12%	32,778.73	0.11%	\$50,014.54	0.17%	\$229,878.67	0.76%	\$189,483.14	0.61%
October	1,644,954.75	9.89%	2,471,220.67	9.44%	2,496,242.85	8.46%	2,322,904.90	7.97%	2,507,201.84	9.02%	2,681,784.30	9.31%
November	1,096,355.52	16.33%	2,545,120.38	19.04%	1,370,801.35	13.04%	1,663,470.07	13.56%	1,518,856.72	14.03%	1,578,209.79	14.43%
December	5,946,995.03	51.26%	8,382,426.95	50.66%	9,724,522.81	45.57%	11,181,528.75	51.11%	11,250,495.15	51.12%	11,641,943.00	52.17%
January	1,352,374.64	59.21%	2,144,545.88	58.75%	3,935,570.61	58.73%	2,198,337.46	58.49%	2,619,911.26	59.76%	2,334,390.29	59.74%
February	4,682,237.30	86.71%	7,861,592.36	88.40%	9,442,879.29	90.31%	7,946,044.44	85.18%	8,753,283.75	88.62%	9,652,049.72	91.04%
March	1,701,188.26	96.70%	2,259,943.99	96.92%	1,993,481.96	96.98%	3,499,651.98	96.93%	2,670,625.80	97.43%	1,967,902.02	97.42%
April	234,122.36	98.08%	316,110.37	98.11%	327,843.24	98.08%	424,517.14	98.36%	263,800.46	98.30%	289,564.49	98.35%
May	147,247.07	98.94%	237,228.42	99.01%	163,239.06	98.62%	171,480.26	98.94%	154,484.50	98.80%	221,383.16	99.07%
June	72,019.95	99.36%	113,358.61	99.44%	159,682.56	99.16%	140,533.24	99.41%	132,497.94	99.24%	131,140.93	99.50%
July	53,197.35	99.68%	86,694.60	99.76%	162,317.66	99.70%	110,764.70	99.78%	140,364.29	99.70%	80,144.20	99.76%
August	55,044.58	100.00%	62,558.28	100.00%	90,035.77	100.00%	65,338.63	100.00%	89,776.32	100.00%	74,835.58	100.00%
Actual	17,024,797.81		26,513,682.11		29,899,395.89		29,774,586.11		30,331,176.70		30,842,830.62	
<i>Budgeted</i>	<i>0.00</i>		<i>0.00</i>		<i>0.00</i>		<i>0.00</i>		<i>30,225,000.00</i>		<i>30,628,000.00</i>	
Surplus (Deficit)	17,024,797.81		26,513,682.11		29,899,395.89		29,774,586.11		106,176.70		214,830.62	
			55.74%		12.77%		-0.42%		1.87%		1.69%	

Month Received	FY 13		FY 14		FY 15		FY 16		FY 17		FY 18	
	Amount	Cumulative % Collected	Amount	Cumulative % Collected	Amount	Cumulative % Collected	Amount	Cumulative % Collected	Amount	Cumulative % Collected	Amount	Cumulative % Collected
September	179,166.53	0.57%	160,921.42	0.50%	259,851.81	0.51%	278,382.73	0.54%	339,228.75	0.65%	362,785.80	0.69%
October	2,956,759.03	9.92%	3,050,202.83	10.00%	5,172,910.12	10.57%	5,283,537.44	10.85%	5,586,048.21	11.42%	6,354,886.69	12.70%
November	2,061,000.07	16.44%	2,347,936.61	17.32%	2,574,318.34	15.58%	3,104,428.55	16.91%	6,047,603.27	23.07%	3,340,552.50	19.01%
December	11,188,946.04	51.84%	11,374,036.57	52.75%	17,555,132.75	49.75%	18,186,414.54	52.40%	15,536,134.84	53.00%	18,855,337.56	54.66%
January	2,559,566.98	59.93%	2,026,048.72	59.06%	4,932,533.49	59.35%	3,630,417.72	59.48%	4,537,690.43	61.74%	4,347,311.75	62.88%
February	10,863,470.98	94.30%	11,962,375.46	96.32%	18,420,202.57	95.32%	18,396,886.90	95.38%	17,929,307.15	96.29%	17,727,763.57	96.39%
March	1,113,108.15	97.82%	497,975.22	97.87%	1,161,678.95	97.46%	1,380,237.59	98.07%	1,140,995.49	98.48%	964,154.83	98.21%
April	298,217.32	98.76%	328,423.16	98.89%	485,341.07	98.41%	424,844.49	98.90%	274,301.01	99.01%	381,710.50	98.94%
May	167,408.37	99.29%	124,581.85	99.28%	308,621.62	99.01%	208,877.93	99.31%	183,768.12	99.37%	252,433.29	99.41%
June	87,682.29	99.57%	102,243.46	99.60%	174,705.34	99.35%	149,842.91	99.60%	131,913.14	99.62%	147,223.83	99.69%
July	67,287.07	99.78%	75,924.49	99.84%	194,518.33	99.72%	104,723.28	99.81%	125,288.28	99.86%	66,373.53	99.82%
August	68,508.00	100.00%	52,131.41	100.00%	141,637.20	100.00%	99,729.66	100.00%	71,673.39	100.00%	96,653.39	100.00%
Actual	31,611,120.83		32,102,801.20		51,381,451.59		51,248,323.74		51,903,952.08		52,897,187.44	
<i>Budgeted</i>	<i>31,279,000.00</i>		<i>31,930,000.00</i>		<i>51,360,000.00</i>		<i>50,854,000.00</i>		<i>51,888,000.00</i>		<i>53,204,000.00</i>	
Surplus (Deficit)	332,120.83		172,801.20		21,451.59		394,323.74		15,952.08		(306,812.56)	
	2.49%		1.56%		60.05%		-0.26%		1.28%		1.91%	

Month Received	FY 19	
	Amount	Cumulative % Collected
September	453,270.01	0.85%
October	6,148,470.62	12.34%
November	3,512,513.35	18.91%
December	18,749,653.21	53.97%
January	4,960,449.48	63.24%
February	18,086,325.18	97.06%
March	1,146,028.79	99.21%
April	425,046.06	100.00%
May		100.00%
June		100.00%
July		100.00%
August		100.00%
Actual	53,481,756.70	
<i>Budgeted</i>	<i>53,621,000.00</i>	
Surplus (Deficit)	(139,243.30)	

HOTEL/MOTEL FUND - HOTEL/MOTEL TAX ANALYSIS FY 2018-2019

Current Year Amounts				
Month	401100			Total
Received				
September (July)	\$758,877.78	\$0.00	\$0.00	\$758,877.78
October (August)	829,062.21	0.00	0.00	829,062.21
November (Sept)	840,456.99	0.00	0.00	840,456.99
December (Oct)	864,639.56	0.00	0.00	864,639.56
January (Nov)	688,131.03	0.00	0.00	688,131.03
February (Dec)	512,866.97	0.00	0.00	512,866.97
March (Jan)	603,559.02	0.00	0.00	603,559.02
April (Feb)	511,397.75	0.00	0.00	511,397.75
May (March)	842,660.08	0.00	0.00	842,660.08
June (April)	0.00	0.00	0.00	0.00
July (May)	0.00	0.00	0.00	0.00
August (June)	0.00	0.00	0.00	0.00
Total	\$6,451,651.39	\$0.00	\$0.00	\$6,451,651.39

Projected Surplus (Deficit) as of Fiscal Year End Based on					
Date Collected	Weighted Average Trend	Prior Year Trend	13-Year Average Trend	Conservative (Minimum) Trend	Composite Trend
September (July)	321,028.29	813,911.50	330,162.24	(772,592.57)	173,127.36
October (August)	797,451.47	1,253,729.55	797,451.47	340,020.96	797,163.36
November (Sept)	984,080.58	1,188,032.46	990,732.99	568,796.68	932,910.68
December (Oct)	919,383.91	1,255,302.25	878,502.40	362,205.54	853,848.52
January (Nov)	898,452.32	972,656.23	854,910.08	497,689.58	805,927.05
February (Dec)	888,517.68	907,898.00	841,303.44	542,167.91	794,971.76
March (Jan)	908,761.90	950,998.35	857,677.78	622,451.89	834,972.48
April (Feb)	795,658.32	928,671.30	762,679.75	543,779.60	757,697.24
May (March)	916,046.70	1,070,225.49	902,513.30	712,560.96	900,336.61
June (April)					
July (May)					
August (June)					

Current Projections:

6,451,651.39 Actual Collections
 72.36% **weighted avg trend**
8,916,046.70 FY19 Projected

8,916,046.70 FY19 Projected
 8,000,000.00 Budgeted revenue for FY19
916,046.70 Surplus (Deficit)

6,451,651.39 Actual Collections
 71.13% **prior year trend**
9,070,225.49 FY19 Projected

9,070,225.49 FY19 Projected
 8,000,000.00 Budgeted revenue for FY19
1,070,225.49 Surplus (Deficit)

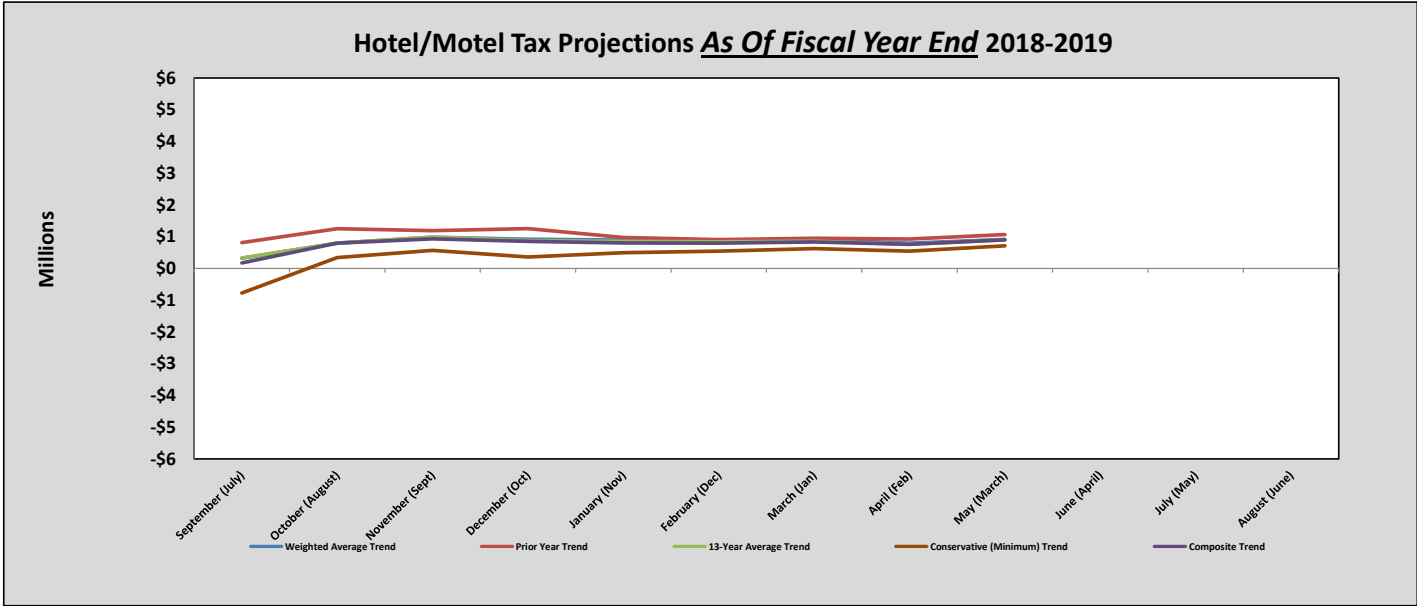
6,451,651.39 Actual Collections
 72.47% **13-year avg trend**
8,902,513.30 FY19 Projected

8,902,513.30 FY19 Projected
 8,000,000.00 Budgeted revenue for FY19
902,513.30 Surplus (Deficit)

6,451,651.39 Actual Collections
 74.05% **Conservative trend**
8,712,560.96 FY19 Projected

8,712,560.96 FY19 Projected
 8,000,000.00 Budgeted revenue for FY19
712,560.96 Surplus (Deficit)

8,900,336.61 **Composite Projection**
 8,000,000.00 Budgeted Revenue for FY19
900,336.61 **Composite Surplus (Deficit)**



Wheel Tax Report

	General Fund	GP Schools	Public Library	Monthly Total	Cumulative Total	% of Total Per Month	Variance by Monthly Total
FY'2017							
<i>Budget</i>	13,100,000.00						
July	45,942.84	138,055.41	950,392.95	1,134,391.20	1,134,391.20	8.37%	
August	53,397.65	160,456.64	1,104,606.17	1,318,460.46	2,452,851.66	9.72%	
September	46,656.86	140,200.99	965,163.45	1,152,021.30	3,604,872.96	8.50%	
October	46,442.29	139,556.21	960,724.65	1,146,723.15	4,751,596.11	8.46%	
November	34,825.30	104,647.88	720,410.77	859,883.95	5,611,480.06	6.34%	
December	43,155.02	129,678.18	892,722.90	1,065,556.10	6,677,036.16	7.86%	
January	39,768.66	119,502.38	822,671.28	981,942.32	7,658,978.48	7.24%	
February	43,674.51	131,239.21	903,469.28	1,078,383.00	8,737,361.48	7.95%	
March	55,405.89	166,491.27	1,146,149.39	1,368,046.55	10,105,408.03	10.09%	
April	44,040.84	132,340.02	911,047.38	1,087,428.24	11,192,836.27	8.02%	
May	44,416.31	133,468.27	918,814.42	1,096,699.00	12,289,535.27	8.09%	
June	51,423.40	154,524.13	1,063,765.95	1,269,713.48	13,559,248.75	9.36%	
FY'2018							
<i>Budget</i>	13,170,000.00						
July	47,511.85	142,770.19	982,850.16	1,173,132.20	1,173,132.20	8.54%	38,741.00
August	51,071.95	153,468.04	1,056,495.71	1,261,035.70	2,434,167.90	9.18%	(57,424.76)
September	45,708.15	137,350.16	945,537.89	1,128,596.20	3,562,764.10	8.22%	(23,425.10)
October	46,032.26	138,324.10	952,242.64	1,136,599.00	4,699,363.10	8.28%	(10,124.15)
November	40,488.28	121,664.79	837,557.58	999,710.65	5,699,073.75	7.28%	139,826.70
December	41,973.38	126,127.41	868,278.91	1,036,379.70	6,735,453.45	7.55%	(29,176.40)
January	39,552.45	118,852.68	818,198.67	976,603.80	7,712,057.25	7.11%	(5,338.52)
February	45,411.66	136,459.23	939,404.61	1,121,275.50	8,833,332.75	8.17%	42,892.50
March	48,012.07	144,273.30	993,197.78	1,185,483.15	10,018,815.90	8.63%	(182,563.40)
April	49,922.47	150,013.93	1,032,717.10	1,232,653.50	11,251,469.40	8.98%	145,225.26
May	51,105.44	153,568.69	1,057,188.55	1,261,862.68	12,513,332.08	9.19%	165,163.68
June	49,325.74	148,220.80	1,020,372.94	1,217,919.48	13,731,251.56	8.87%	(51,794.00)
FY'2019							
<i>Budget</i>	13,600,000.00						
July	53,826.56	161,745.50	1,113,478.89	1,329,050.95	1,329,050.95		155,918.75
August	54,453.43	163,629.19	1,126,446.47	1,344,529.09	2,673,580.04		83,493.39
September	42,018.39	126,262.68	869,210.13	1,037,491.20	3,711,071.24		(91,105.00)
October	53,466.34	160,663.06	1,106,027.18	1,320,156.58	5,031,227.82		183,557.58
November	40,639.06	122,117.88	840,676.75	1,003,433.69	6,034,661.51		3,723.04
December	34,770.27	104,482.51	719,272.38	858,525.16	6,893,186.67		(177,854.54)
January	46,453.41	139,589.62	960,954.67	1,146,997.70	8,040,184.37		170,393.90
February	46,975.15	141,157.42	971,747.61	1,159,880.18	9,200,064.55		38,604.68
March	50,959.33	153,129.64	1,054,166.08	1,258,255.05	10,458,319.60		72,771.90
April	49,936.42	150,055.84	1,033,005.62	1,232,997.88	11,691,317.48		344.38
May				-			
June				-			

Howard G. Hogan
Chancery/Probate Courts

	<u>FY19</u>	<u>FY18</u>	<u>Difference</u>
July	33,011.02	38,022.98	(5,011.96)
August	41,528.96	46,172.30	(4,643.34)
September	37,229.24	61,231.66	(24,002.42)
October	20,405.07	25,293.23	(4,888.16)
November	19,186.83	18,925.68	261.15
December	16,912.67	29,206.31	(12,293.64)
January	31,180.67	28,919.79	2,260.88
February	39,909.94	38,614.24	1,295.70
March	63,751.82	51,555.58	12,196.24
April	33,543.18	47,523.90	(13,980.72)
May			-
June			-
	<u>336,659.40</u>	<u>385,465.67</u>	<u>(48,806.27)</u>

MIKE HAMMOND
Criminal/Sessions Court

	<u>FY2019</u>	<u>FY2018</u>	<u>Difference</u>
July	240,307.10	245,410.01	(5,102.91)
August	251,248.60	234,858.90	16,389.70
September	226,752.04	239,007.71	(12,255.67)
October	249,222.71	247,848.15	1,374.56
November	238,938.64	251,413.92	(12,475.28)
December	193,809.31	239,113.19	(45,303.88)
January	262,430.28	284,322.12	(21,891.84)
February	284,394.99	294,375.31	(9,980.32)
March	240,770.11	269,457.78	(28,687.67)
April	223,200.36	283,663.54	(60,463.18)
May			-
June			-
	<u>2,411,074.14</u>	<u>2,589,470.63</u>	<u>(178,396.50)</u>

Charles D. Susano III
Knox County Circuit, Civil Sessions and Juvenile Court Clerk

	<u>FY19</u>	<u>FY18</u>	<u>Difference</u>
July	227,744.43	196,564.99	31,179.44
August	231,778.52	272,918.80	(41,140.28)
September	177,387.38	171,612.91	5,774.47
October	207,153.54	184,961.37	22,192.17
November	221,584.98	188,733.49	32,851.49
December	194,796.59	159,881.44	34,915.15
January	213,759.31	225,820.81	(12,061.50)
February	227,959.31	205,035.22	22,924.09
March	186,264.51	216,981.49	(30,716.98)
April	265,777.00	207,894.12	57,882.88
May			-
June			-
	<u>2,154,205.57</u>	<u>2,030,404.64</u>	<u>123,800.93</u>